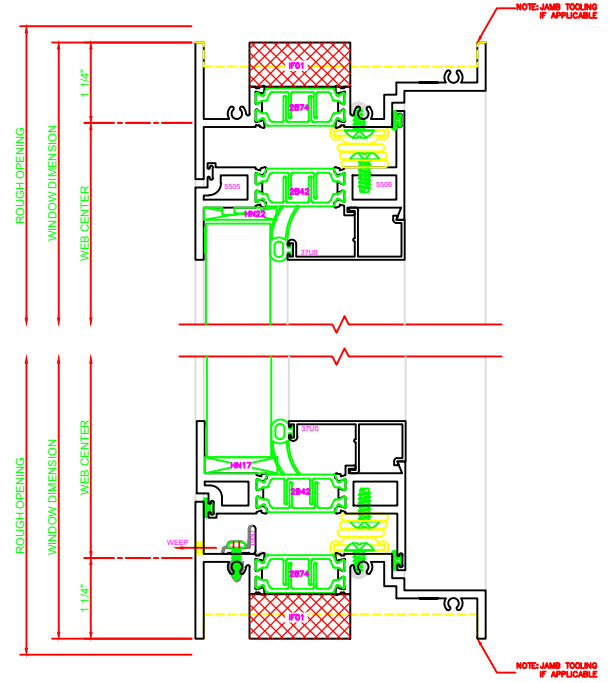


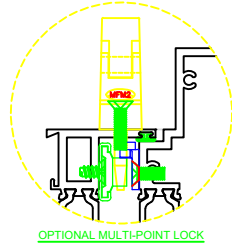
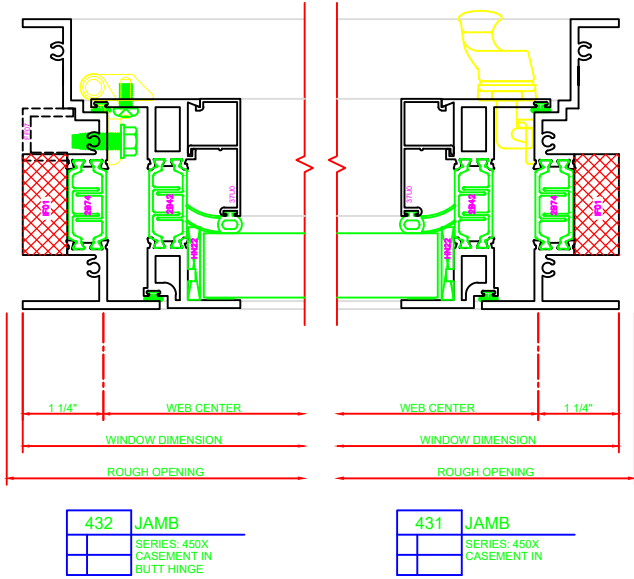
130	HEAD
SERIES: 450X CASEMENT IN 4-BAR ARMS	

230	SILL
SERIES: 450X CASEMENT IN 4-BAR ARMS	



4-BAR ARMS BUTT HINGE

ERECTOR NOTE:
 THE HINGED JAMB FRAME SHALL BE INSTALLED PLUMB. ALL HINGES SHALL BE SECURELY BLOCKED AND ANCHORED TO THE CONDITION THROUGH THE HINGES OR AS CLOSE AS POSSIBLE TO THE HINGES.



131	HEAD
SERIES: 450X CASEMENT IN BUTT HINGE	

231	SILL
SERIES: 450X CASEMENT IN BUTT HINGE	

